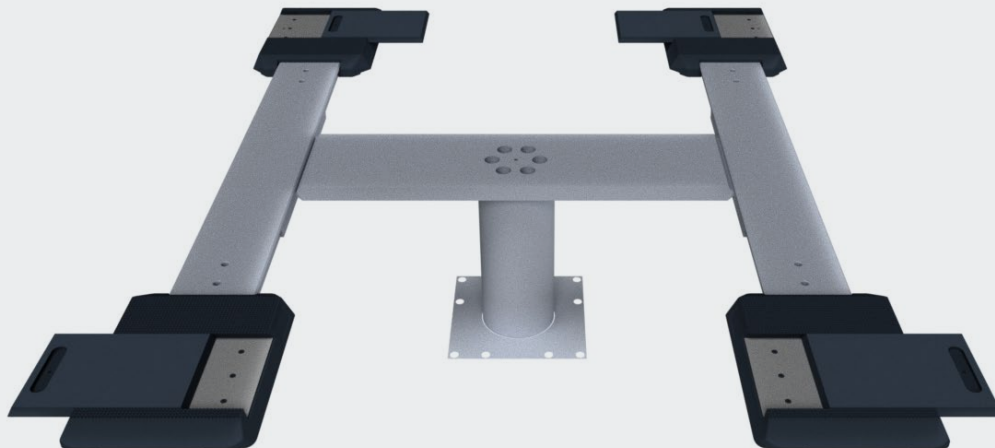


Sololift 1.35 Pv Ø 213

Electro-hydraulic single-ram lift, 3.5 t capacity, flat lifting supports



Application

- Check-in
- Wash
- Repairs and maintenance
- Test

Description:

Steel cassette:

- Waterproof steel cassette
- Self-carrying

Hydraulic unit:

- Hard-chrome plated cylinder
- High stability (Cyl.-Ø213mm)
- Integrated anti-rotation device
- Corrosion-free guiding element
- Pump unit with immersed motor for fitting on wall
- Hydraulic oil
- Pneumatic emergency lowering
- Programmable pushbutton control unit
- Alarm signal / CE-stop

Superstructure:

- 2 flat lifting supports in different lengths available
- Rubber-coated, non-skid pads
- Low minimum height

Standard colours:

- Standard surface-treatment:
Zinc-coated and painted in RAL 9006 white aluminium

Versions:

Steel cassette:

- Hot galvanized
- Coated

Installation:

- Superstructure on floor
- Ceiling installation
- Hydraulic pump unit in floor
- Hydraulic pump unit on wall

Optional extras:

- XY-pads
- Sets of rubber blocks,
40, 60, 80 and 100 mm

Special colours available on request!

